
Handling & Storage Guidelines for Prepainted Metal

Handling & Storage Guidelines for Prepainted Metal

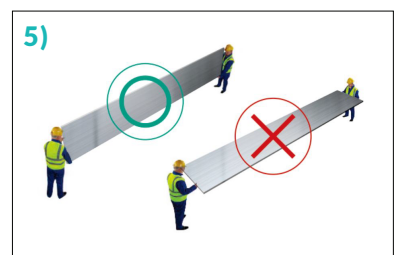
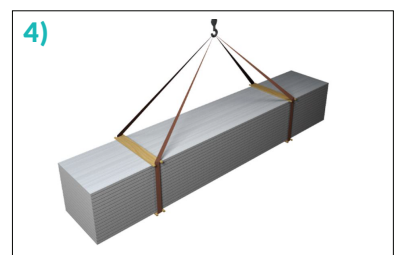
Prepainted metal has been used for many years in various applications. However, as with all materials, to achieve the longest possible life and the best possible looks, a bit of care is needed in handling the material. Prepainted metal is generally produced and delivered in coil form and so these guidelines start by looking at handling and storage of coil.

For many applications, prepainted metal is subsequently cut, handled and stored in sheet form and so further guidelines are given specifically for sheet.

In all cases, this guidance is intended to ensure that the prepainted metal arrives at its final use in optimum condition. Please follow our material storage and handling guide. Or else, it might not cover our guarantee range.

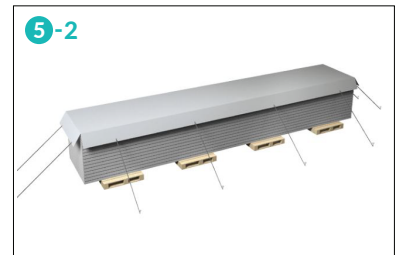
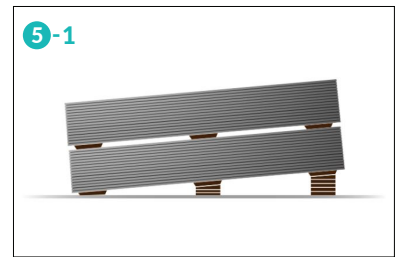
1. Handling

- 1) Be sure to wear safety gear and make premaster to prevent safety accident.
- 2) Be sure to have enough room when using carrier or fork-lift to prevent impact accident. Also, use rubber pad on machine with contact directly on product.
- 3) When handling sheeted product, make sure to use wide fork-lift with center part.
- 4) When handling with crane, tight at least 2 point on length way when is lifted.
- 5) When handling single sheet, please move is vertical way to prevent bending. Also, make sure grab it both end part with as many people as you could.
- 6) Do not drag the sheet to make friction between sheets. It may cause scratch on surface.



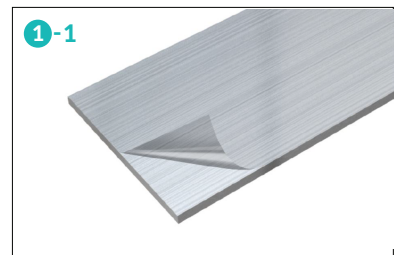
2. Storage

- 1) If you are not use it right-away, make sure put the product on clean and secure surface. Also, use wooden pallet or rubber matt to prevent direct contact with ground.
- 2) Do not over storage above other product. It could damage itself because of weight.
- 3) Be sure storage indoor on consistence temperature with low humidity condition. Or it could damage from moisture rust.
- 4) In case using part of production, be sure repack the product until next time.
- 5) In case could not use it in 30days, please storage indoor with following procedure.
 - 5-1 Make sure have angle to drain out the moisture on product with palate as following figure.
 - 5-2 Cover with water proof plastic sheet to prevent rain or snow. Also, make sure to have space between each other to have good air circulation.



3. Protective Film

- 1) Make sure to proceed following order with protective filmed product.
 - 1-1 Peel off protection film right after installation.
 - 1-2 When peeling off, start with edge part. About 45 degree is the ideal to perfectly remove.
 - 1-3 In case not using the product in 60days, the protection film must be removed. If the protection film remain over 60 days, the adhensive force might increes. In this case, the adhensive glue might remain on surface or the filme could ripped a part.



4. Cold temperture condition processability.

- 1) In Winter season, if the product temperature drop under 15°C, it could cause surface crack when is processed.
- 2) In case, be sure the processing temperature is above 15°C with heating system.



5. Usage

- 1) If it used on different usage between initial order, it might be work differently or damage process facility.